



## Big Chill Door Removal and Replacement Instructions

If doorways and openings are not wide enough for the refrigerator to fit through safely it may be necessary to remove both the freezer and refrigerator door to reduce the overall depth of the unit. *Before removing the doors, confirm that the unit will fit through the opening(s) in question once the doors are removed.*



### STEP 1:

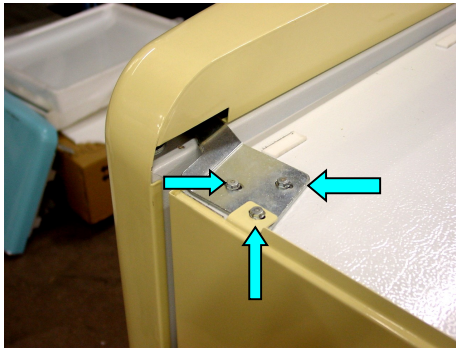
Remove the screws located on the rear of the top cap. Then remove the top cap by lifting the rear of the cap first.



### STEP 2:

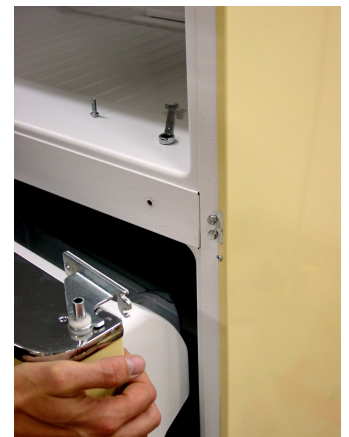
Reinsert the foam spacer between the refrigerator and freezer door. This will help create stability and keep the freezer door from falling or bending when the bolts are removed in step 3.





STEP 3: Remove the 3-freezer door top hinge bolts with a 5/16" socket and remove the freezer door and top hinge. Make note of all shim and washer quantities and locations to ensure they are re-installed in the same location.

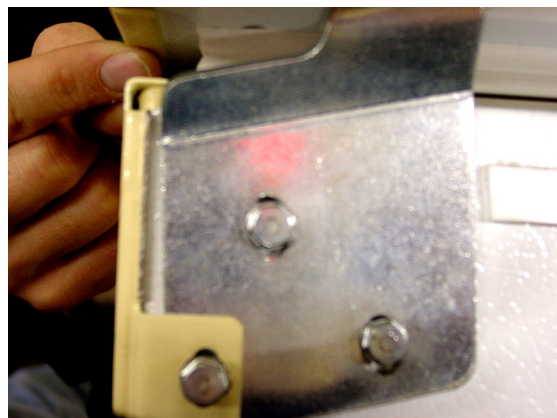
STEP 4:  
Using a 5/16" wrench, loosen but do not remove the 2 outer refrigerator door hinge bolts. Then remove the inner refrigerator door hinge bolt. Slide the hinge off the 2 outer bolts and remove the door. Make note of all shim and washer quantities and locations to ensure they are re-installed in the same location.



Once the refrigerator is in place, reattach both the freezer and refrigerator doors reversing the process above with the following additions.



After properly reattaching the refrigerator door, place the foam spacer on top of the refrigerator door to prevent damage. Set the freezer door into place.



Reinsert all 3-freezer hinge bolts finger tight. Ensure the gap between the freezer door and refrigerator door is uniform and then tighten the screws.